

Campus Layout and Directions

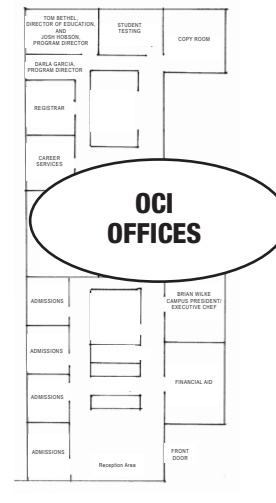


OCI OFFICES

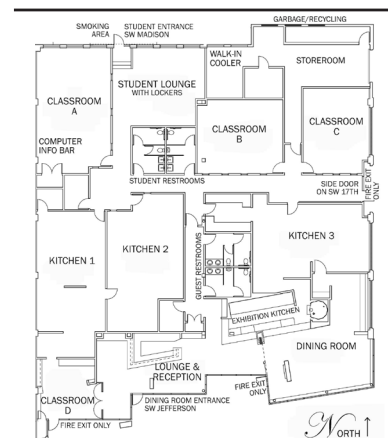
1717 SW Madison Street
Portland, OR 97205
Phone 503.961.6200 / 1.888.OCI.CHEF
Fax 503.200.1140

KITCHENS & CLASSROOMS

1701 SW Jefferson Street
Portland, OR 97201



SW MADISON ST.



SW 17th AVE.

SW JEFFERSON ST.

FROM THE NORTH

Take I-5 South, and merge onto I-405 from Exit 302B. Cross the Fremont Bridge and follow the signs toward Beaverton/US-30 W/St. Helens. The bridge splits at the end; follow the route to the left indicating Beaverton. Take the Couch Street exit (Exit 2A) and stay straight. Once you cross Burnside, this turns into SW 15th Avenue. From SW 15th, turn right onto SW Salmon Street. Turn left onto SW 18th Avenue. Go straight ahead and veer partially around the roundabout, heading east on Columbia. Take your first left onto 17th. Kitchens and Classrooms are across Jefferson on your left. The Offices are one block straight ahead.

FROM THE SOUTH

Take I-5 North, and merge onto I-405. Take the 12th Avenue exit, #1D. Stay straight onto 12th Avenue. Turn left onto Jefferson Street. Go down the hill. Kitchens and Classrooms are on your right. To get to the Offices turn right on 17th and they're one block ahead on your left.

FROM THE WEST

Take Highway 26 toward Portland. Take the SW Canyon Road/PGE Park exit (Exit 73). SW Canyon Road becomes SW Jefferson Street. When you get to the intersection at SW 18th, veer to the right around the roundabout, heading east on Columbia. Take your first left onto 17th. Kitchens and Classrooms are across Jefferson on your left. The Offices are one block straight ahead.

FROM THE EAST

If you're coming from Portland International Airport, take Portland's light rail system, MAX, from the airport to the school or the offices. If you're driving, take I-205 South, merge onto I-84 West toward Portland, merge onto I-5 South toward Beaverton and Salem, then merge onto I-405 North. Take the 12th Avenue exit, #1D. Stay straight onto 12th Avenue. Turn left onto Jefferson Street. Go down the hill to the corner of SW 17th and Jefferson. Kitchens and Classrooms are on the corner. Turn right one block for the Offices.